

## Ballabeg Assembly Instructions

This kit is based on Ballabeg station on the Isle of Mann Railway near Castletown. Many of the small stations on the island are to this basic design with just a few detail differences.



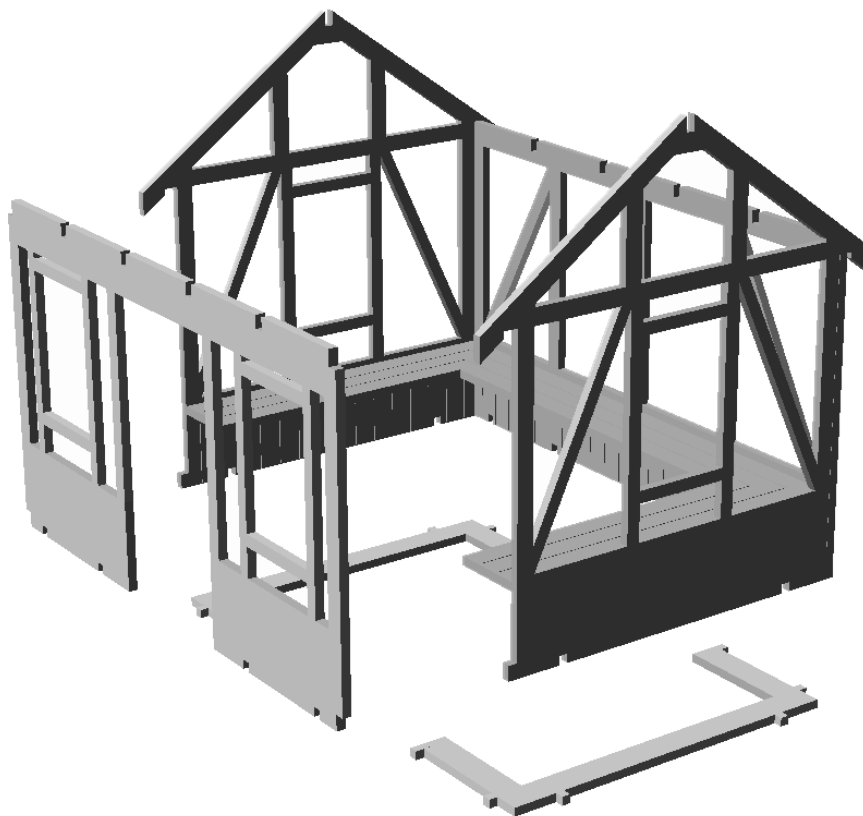
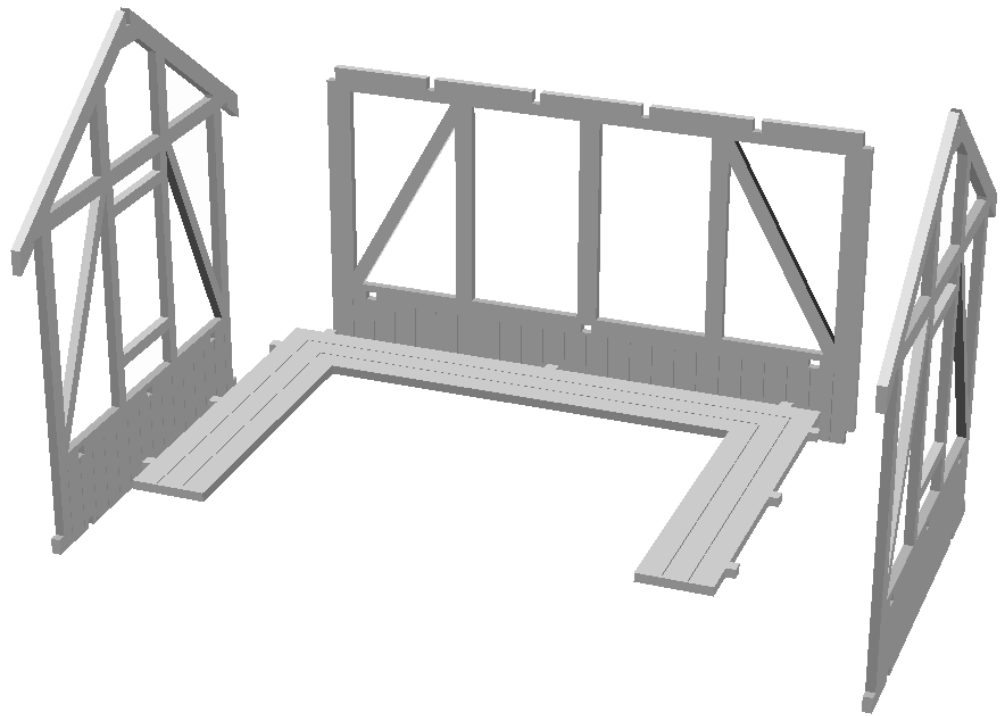
Most of this kit is laser cut poplar plywood. This is moderately water resistant but with a reasonably amount of painting or varnishing should prove rain resistant if not left outside all winter. We do however recommend using water proof PVA wood working glue (e.g. Evostick in the blue bottles) to glue the plywood parts together.

The window panes are laser cut "PETg". These are totally weather proof and easy to glue. We recommend gluing with a "canopy glue" or a contact adhesive like Evostik or UHU. Be careful of super glues because many brands can leave white "smoke marks". The roof and wall overlays are vacuum formed HIPS. This is easily stuck with various glues and we suggest that epoxy resin (e.g. araldite) or aero modellers "canopy glue" is used to stick them to the plywood roof rafters and walls.

Painting or varnishing is very much a matter of personal preference. We suggest you plan ahead and either paint the components before you assemble them or assemble the lot; paint in your base colour and then pick out the details in other colours. It's whatever works for you.

## Step 1 – Main Walls

Glue the two side walls to the back wall and seat. Make sure the scribed planking is on the inside and the scribed face of the seat is on top.



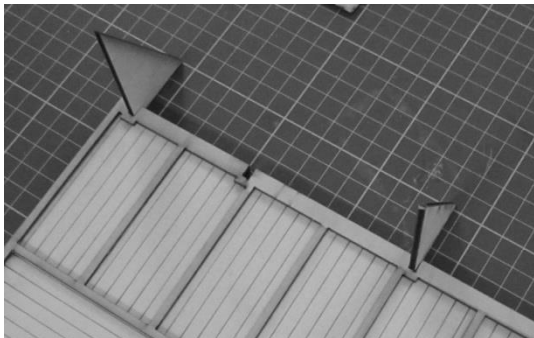
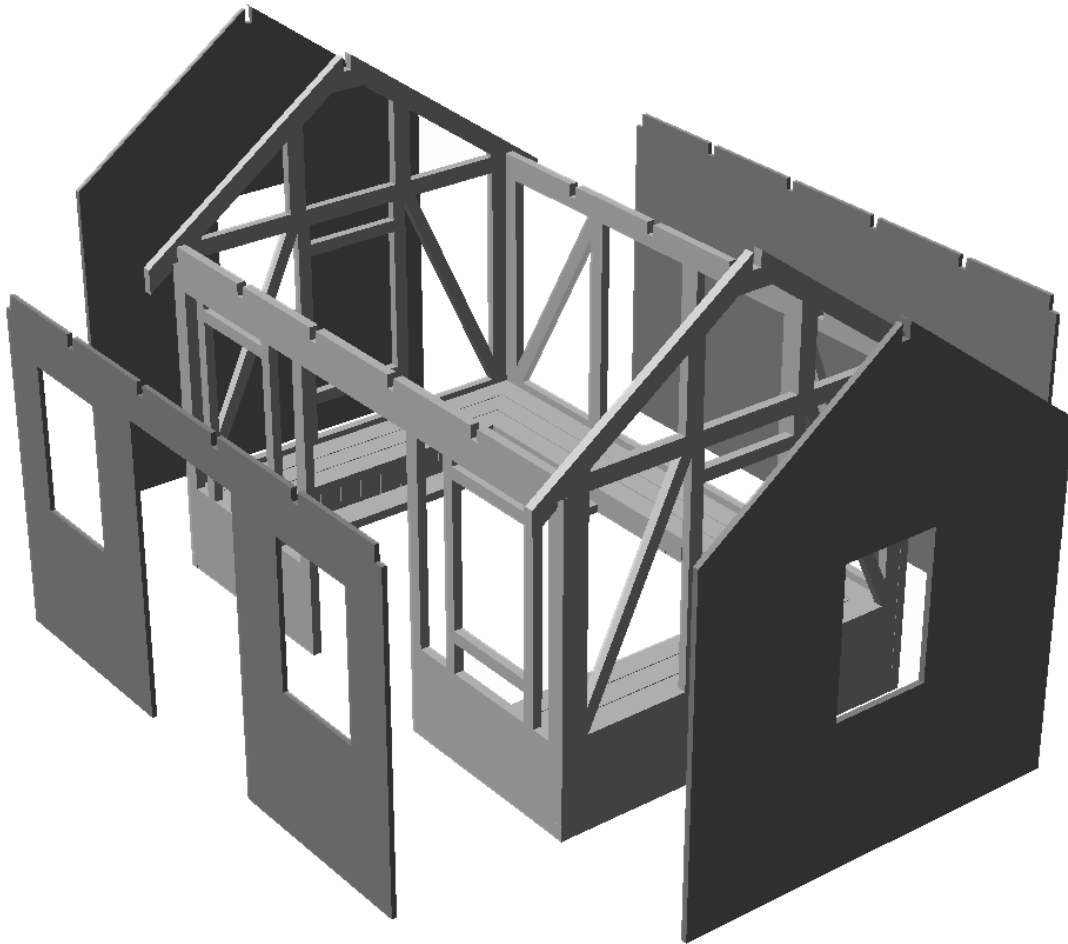
Glue the front wall in place and then the two end braces into their sockets in the wall bottoms.

Set aside to let the glue dry.

Now is a good time to paint or varnishes the inner wall faces.

## Step 2 - Wall Cladding

Glue the front and back overlays (vacuum formed styrene) onto their respective walls). The top and bottom edges should be flush. Make sure the rafter slots align at the top of the walls.



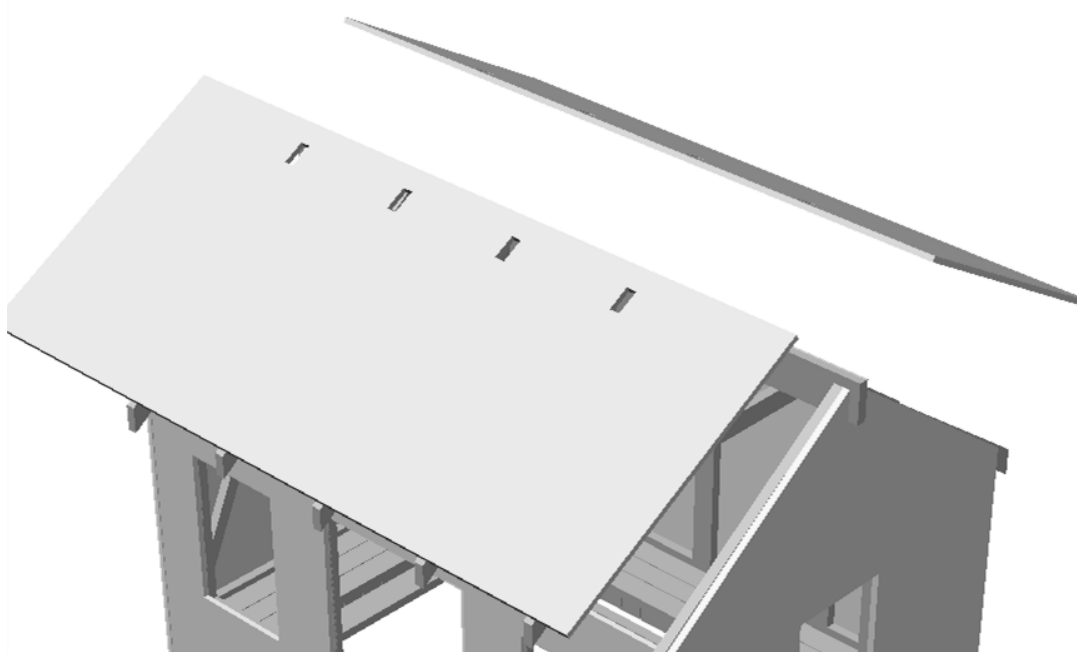
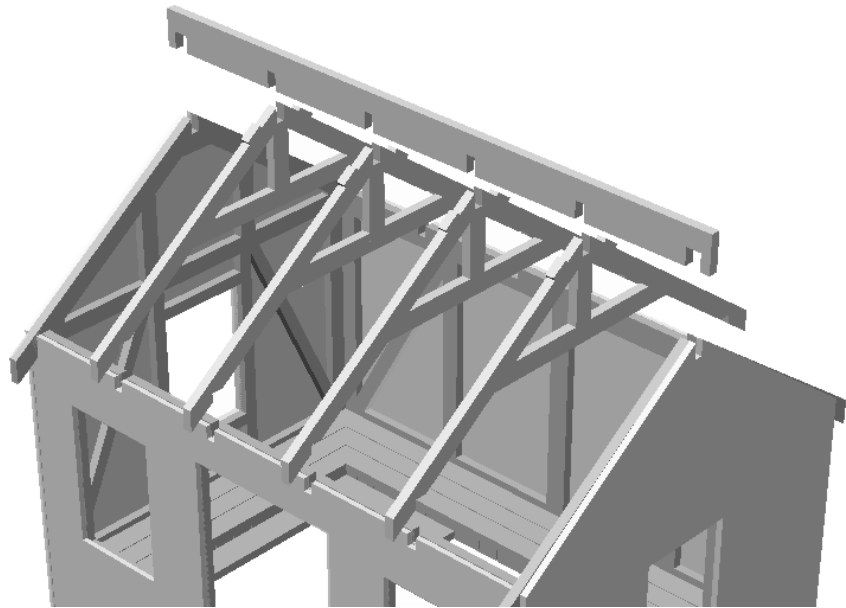
TIP: Temporarily push a couple of scraps of 3 mm ply into the slots to help align the parts.

Glue the side overlays in place and set aside to dry. If necessary fill any gaps on the corners with model filler.

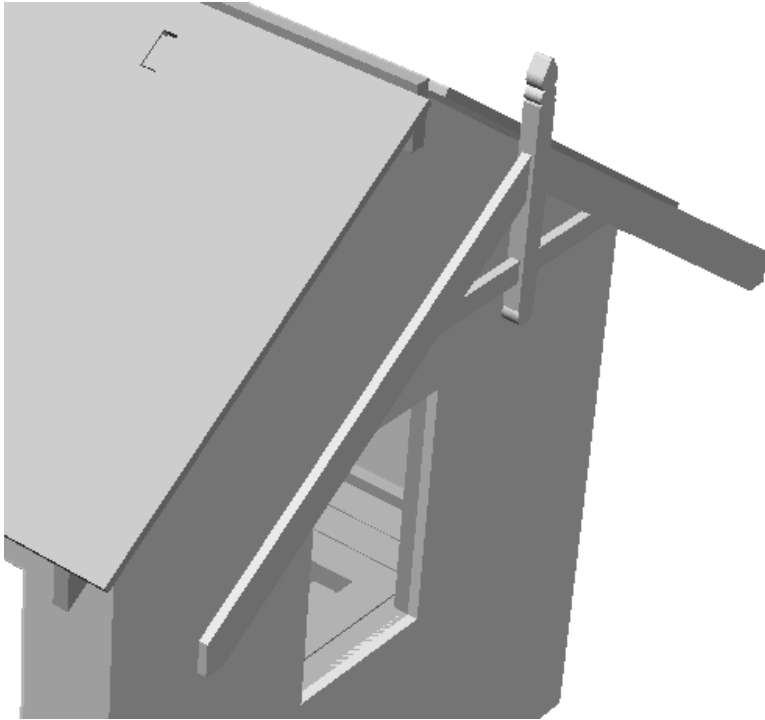
Now may be a good time to paint the cladding (particularly if you are spraying).

### Step 3 – Roof Assembly

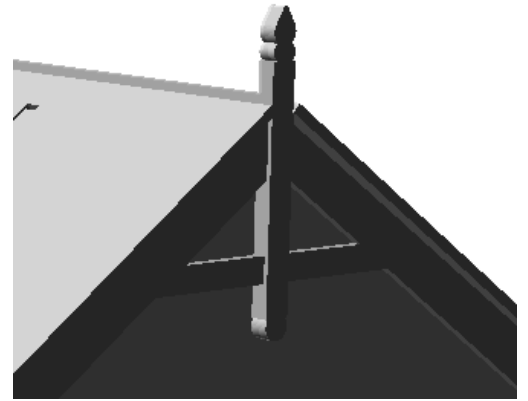
Glue the 4 rafters into their sockets in the wall tops. (These sockets may need cleaning out with a file first if the overlays aren't aligned perfectly). Then glue the roof ridge beam in place. Allow glue to dry.



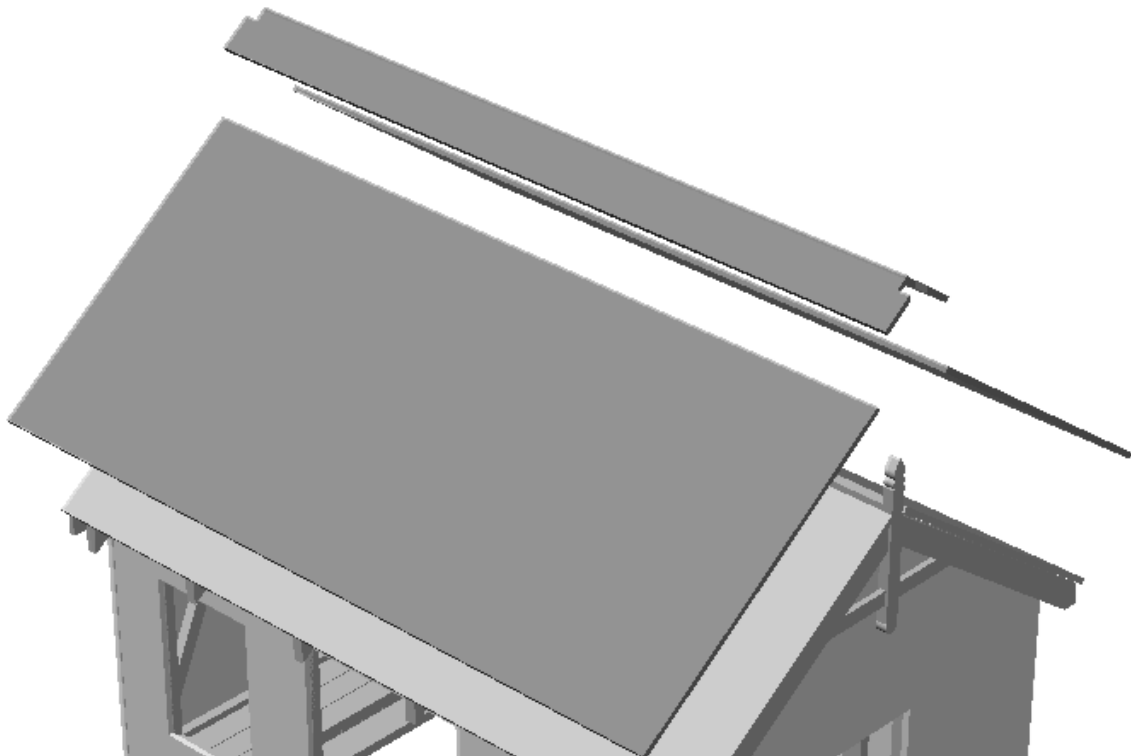
Glue the roof panels in place onto the locating lugs on the rafters.



Glue the two end barge boards under the ends of the roof panels



Glue the vacuum formed corrugated overlays to the 1.5mm ply wood roof panels; we suggest epoxy resin or “canopy glue” for this. Next cut the pre-formed roof ridge to size and cut two small notches to clear the finials on the barge boards and glue onto the ridge.

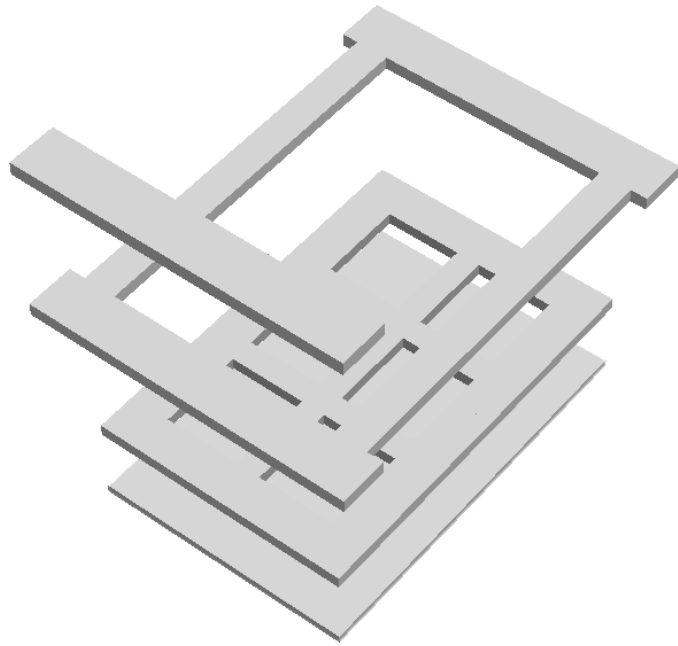


## Step 4 – Windows

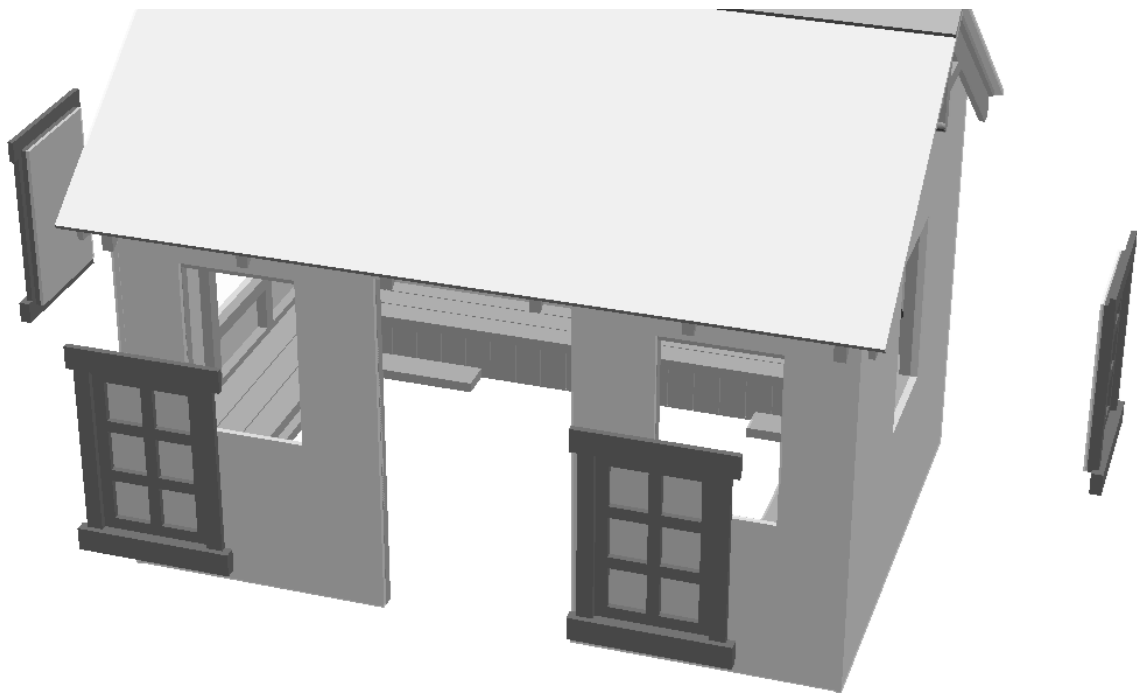
Glue the window frames to their surrounds taking care that the surrounds are central so that “lips” formed for locating the windows in the window opening, are even. Glue the bottom sill thickening pieces in place.

We suggest you paint the window frames at this point.

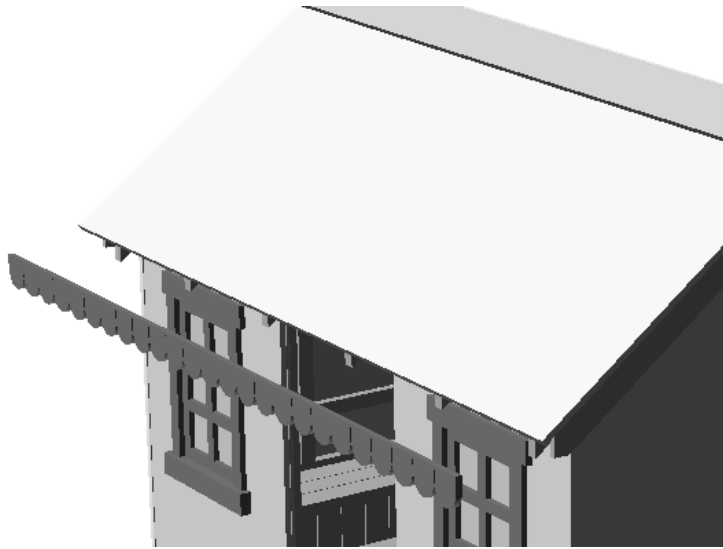
Glue the 4 window frames to the glazing panes. We use a very thin bead of contact adhesive or canopy glue for this.



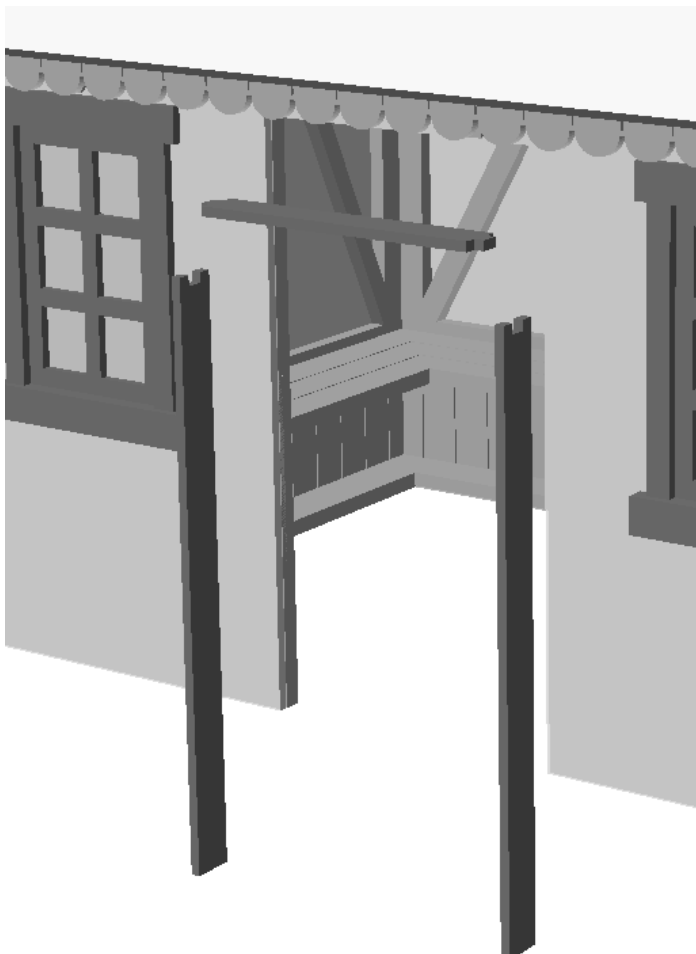
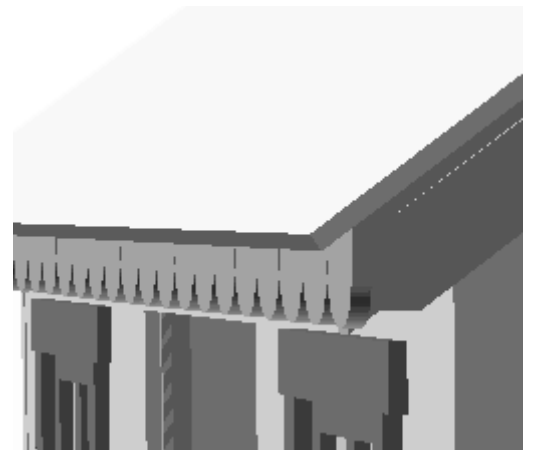
Now glue the windows in place.



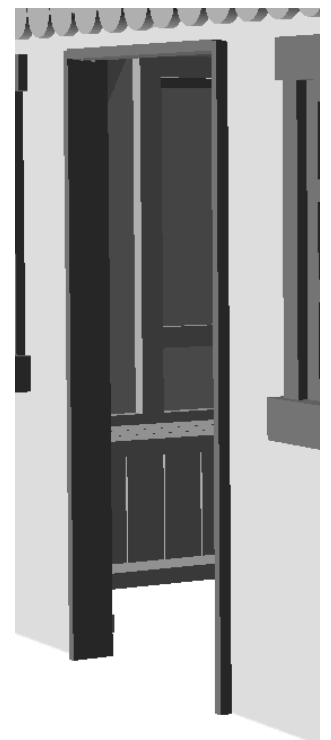
## Step 6 – Finishing Touches

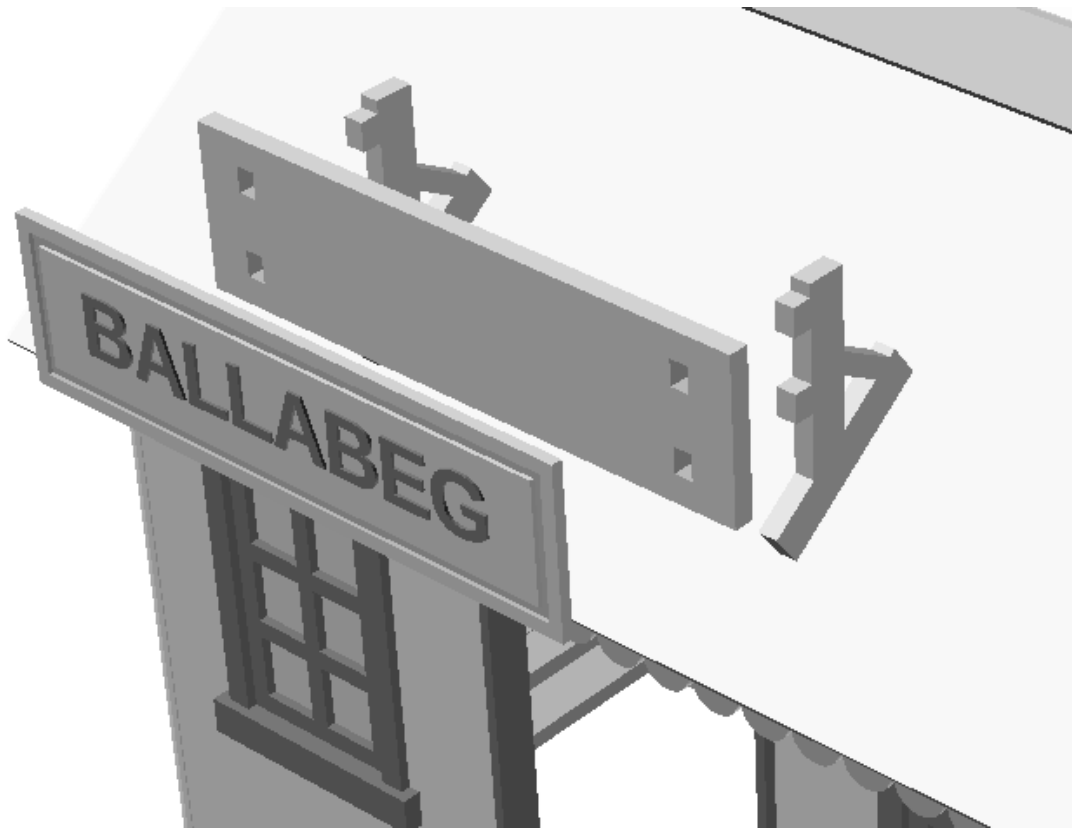


Glue the front and rear barge boards onto the rafters' ends and under the roof panel.



Glue the door lintel (1.5mm ply) to the two door jambs and glue into the door recess





Glue the name board back to its two legs. Glue the name board to its back ( an optional plain board is provided for you to make up your own name). Glue the name board assembly onto the roof with epoxy resin or canopy glue. The board should be central, roughly in line with the front wall.

*Once glue is set; paint or varnish you model as you see fit.*

**JOB DONE!**